

# QUICK-START INSTALLATION GUIDE

## AXIA RADIUS AOIP-AUDIO CONSOLE



## THANK YOU FOR PURCHASING THE AXIA RADIUS AOIP-AUDIO CONSOLE.

We have made the Axia Radius console system easy to set up and configure. This quick-start guide will take you through the basic steps to configure your new Radius 8-Fader Main Frame and QOR.16 engine to have you broadcasting in no time. Before we get started, let's make sure you have what you need.

### REQUIRED EQUIPMENT, CABLES, AND ACCESSORIES:

There are a few additional items required for a successful installation. Check the list below and make sure you have what you need.

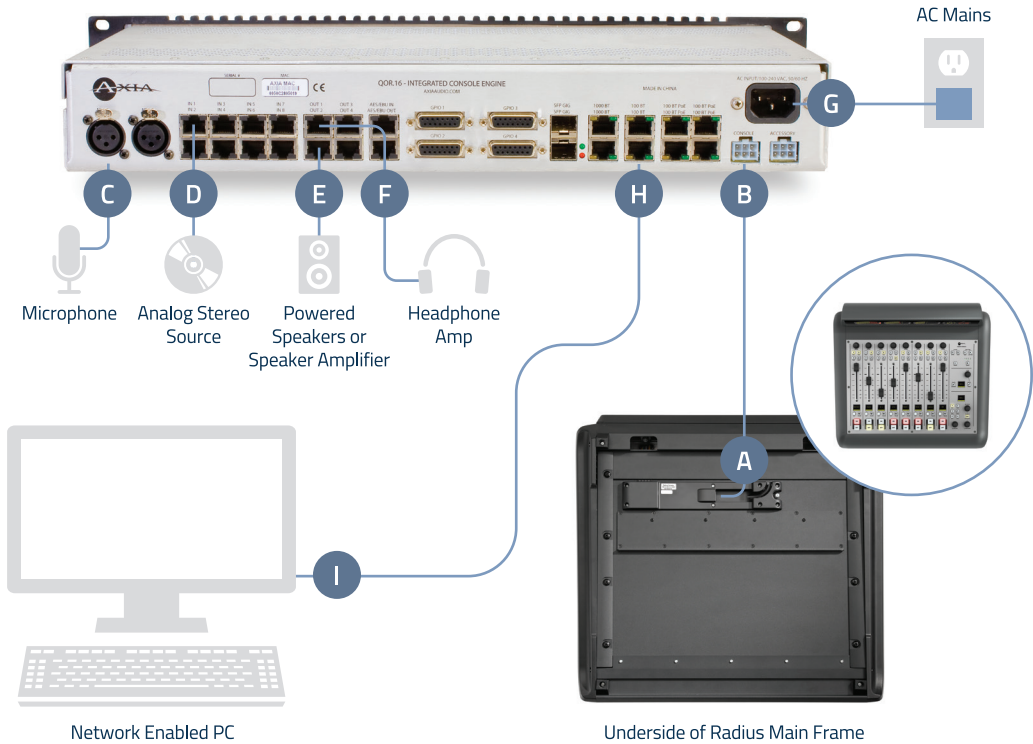
#### Included items:

- Radius Main Frame and QOR.16 (packed separately)
- Radius Power cable
- 6-pin Molex™ cable
- Ethernet cable

#### Items you need to supply:

- PC with available Ethernet port connected to a monitor and keyboard
- Audio cable and/or StudioHub adapters

# INITIAL SET UP



## PHYSICAL CONNECTIONS

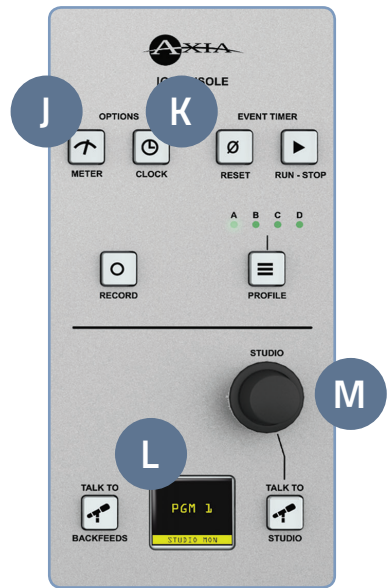
1. **Connect** the end of the provided 6-pin Molex cable without the strain relief to the Molex port (A) on the underside of the Radius Main Frame.
2. **Connect** the other end of the 6-pin Molex cable to the Console port (B) on the QOR.16 unit.
3. **Connect** a microphone to MIC 1 (C).
4. **Connect** an analog stereo source to IN 1 (D) (preferably a professional line level source).
5. **Connect** powered speakers or speaker amplifier to OUT 2 (E).
6. **Connect** headphone amplifier to OUT 1 (F).
7. **Connect** the QOR.16 to AC Mains (G) using the supplied power cable.
8. **Connect** Ethernet cable to the 100 Mbps Ethernet port (H) (marked 100BT) on the QOR.16, **connect** other end directly to the Ethernet port (I) on a PC.

## NETWORK CONFIGURATION

1. **Set** a static IP address of 192.168.2.100 and subnet mask of 255.255.255.0 to the connected PC. The default address of the QOR.16 will be 192.168.2.27. Note: If you wish to use a different IP address or subnet mask for your Radius, proceed to the next step below "Assigning a custom IP address to your Radius", otherwise continue to Step 2 on the next panel.

### ASSIGNING A CUSTOM IP ADDRESS TO YOUR RADIUS (OPTIONAL STEP)

- a. On the Radius Main Console simultaneously **press and hold** the Meter (J) and Clock (K) Keys until the OLED Studio display (L) shows the system options.
- b. **Turn** the Studio Monitor control knob (M) to navigate the options on the Studio display (L) below the knob. **Turn** knob to Navigate to "IP Address". To change the default IP address, **press** knob and **enter** the IP address. Each 8-bit position of the IP address must be selected individually by **turning** the knob until the desired number appears and **pressing** knob to select. If Subnet Mask and Gateway options are required for your network, **turn** the Studio Monitor control knob to navigate to these options and **enter** values.
- c. Once your required settings have been entered, **turn** the Studio Monitor control knob (M) until "Save + Reboot" (N) is displayed and **press** knob to enter.
- d. **Set** a static IP address to the connected PC within the same network as the Radius' new IP address.
- e. Continue to Step 2.

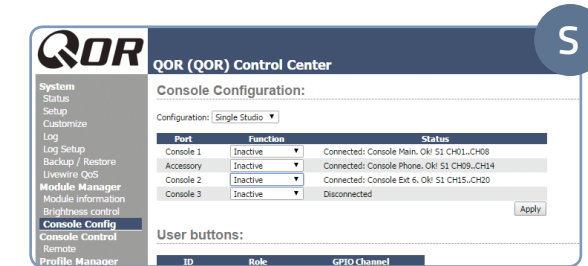
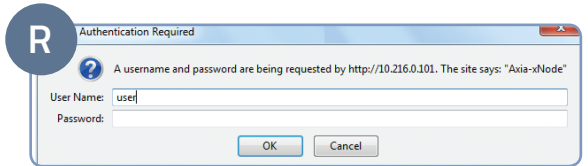
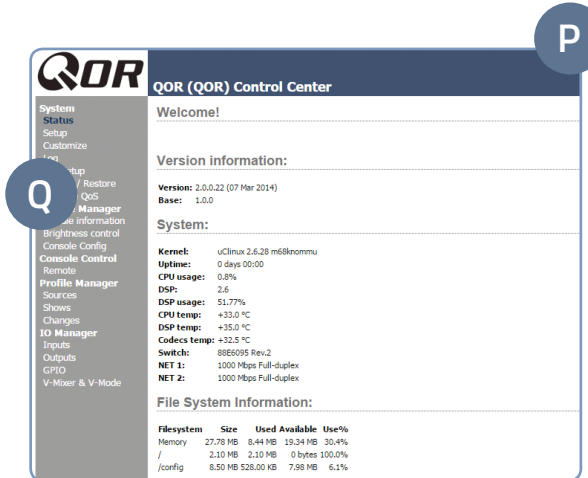
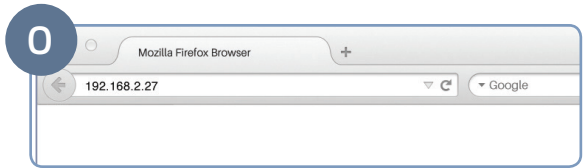


# AUDIO CONFIGURATION (CONT.)

2. **Open** a web browser and **type** the assigned IP address of the Radius into the URL field (O).
3. The QOR Control Center (P) will launch.
4. **Select** "Console Config" (Q) in the left column navigation under Module Manager.
5. A screen (R) will appear prompting you for authentication. When prompted, **enter** user name "user", password is left blank.
6. The QOR Control Center will display the Console Configuration page (S) which lists the connected console. Confirm the console you have connected is listed as connected to the appropriate port.

## CONTINUE TO INPUT CONFIGURATION

The console is now recognized by the network and is ready for input configuration. Continue to the "Input Configuration" instructions.



# INPUT CONFIGURATION



1. Remain logged in to the QOR Control Center.
2. In the QOR Control Center navigation in the left column under IO Manager, **click** "Inputs" (T).
3. **Enter** useful labeling in the name field column (U) for Microphone-1.
4. **Enter** gain stage (V) as needed for the connected microphone.
5. **Click** the "Apply" button (W).
6. **Enter** useful labeling in the name field column (X) for Analog 1.
7. **Click** the "Apply" button (Y).

**QOR (QOR) Control Center**

**Local Microphones:**

#	Name	Power	PreAmp (0, 10 - 65)	Gain (-24 dB)
Microphone 1		<input type="checkbox"/> Enable	+0.0 dB	+0.0 dB
Microphone 2		<input type="checkbox"/> Enable	+0.0 dB	+0.0 dB
Microphone 3		<input type="checkbox"/> Enable	+0.0 dB	+0.0 dB
Microphone 4		<input type="checkbox"/> Enable	+0.0 dB	+0.0 dB

**Local Analog Inputs:**

#	Name	Gain (-24 dB)
Analog 1		+0.0 dB
Analog 2		+0.0 dB
Analog 3		+0.0 dB
Analog 4		+0.0 dB
Analog 5		+0.0 dB
Analog 6		+0.0 dB
Analog 7		+0.0 dB
Analog 8		+0.0 dB
Analog 9		+0.0 dB
Analog 10		+0.0 dB
Analog 11		+0.0 dB
Analog 12		+0.0 dB
Analog 13		+0.0 dB
Analog 14		+0.0 dB
Analog 15		+0.0 dB
Analog 16		+0.0 dB

**Local AES/EBU Inputs:**

#	Name	Input Gain (-127.5 - 0 dB)
AES/EBU 1		+0.0 dB
AES/EBU 2		+0.0 dB

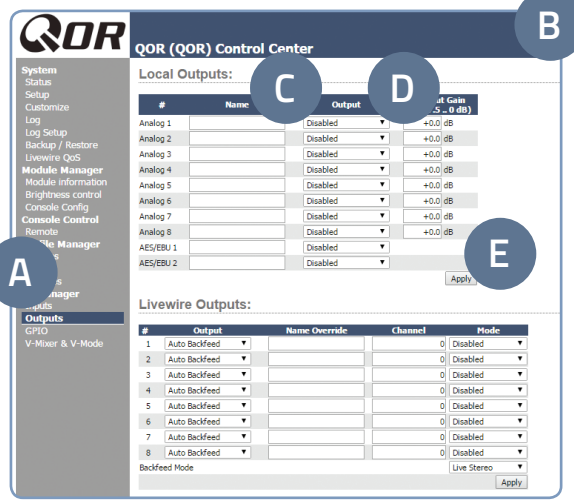
Apply

## CONTINUE TO OUTPUT CONFIGURATION

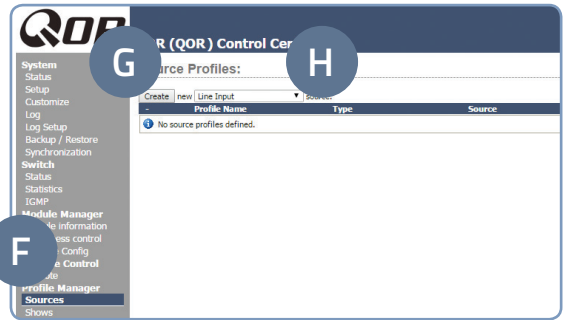
Inputs are now configured and your console is ready for output configuration. Continue to the "Output Configuration" instructions.

# OUTPUT AND SOURCE CONFIGURATION

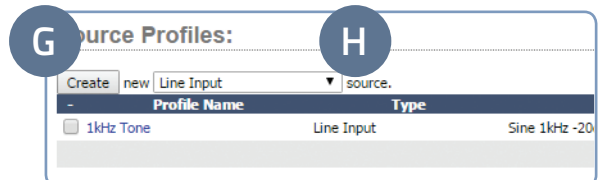
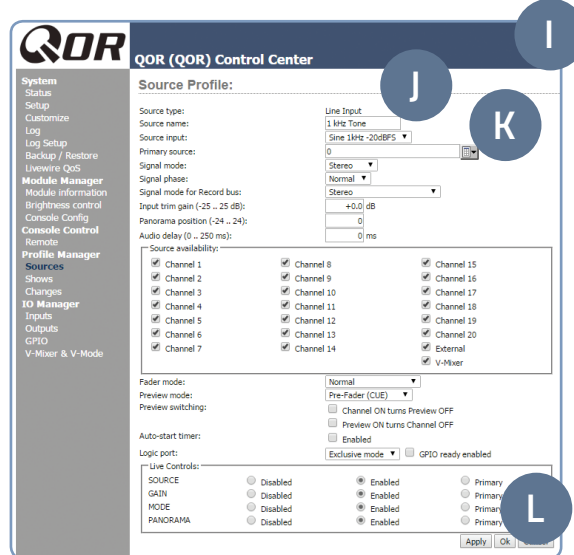
1. Remain logged in to the QOR Control Center.
2. In the QOR Control Center navigation in the left column under IO Manager, **click** "Outputs" (A) to view the Outputs screen (B)
3. **Enter** the name "Headphones" in the name field column (C) for Analog 1.
4. In the Output column (D), **click** the dropdown menu for Analog 1 and **select** "CR Headphones". **Click** the "Apply" button (E).
5. **Enter** the name "Monitor Spkr" in the name field column (C) for Analog 2.



6. In the Output column (D), **click** the dropdown menu for Analog 2 and **select** "CR Monitor".
7. In the QOR Control Center navigation in the left column under Profile Manager, **click** "Sources" (F).
8. **Click** the "Create" button (G). (Note, the dropdown menu (H) to the right of the Create button should remain at its default value of "Line Input".)



9. An expanded new Source Profile screen will open (I).
10. **Enter** "1 kHz Tone" in the Source Name field (J).
11. **Select** the "Sine 1 kHz - 20dBFS" option from the Source input dropdown menu (K).
12. **Click** the "OK" button (L).
13. **Click** the "Create" button (G) again. (Note, the dropdown menu (H) to the right of the Create button should remain at its default value of "Line Input".)



# OUTPUT AND SOURCE CONFIGURATION (CONT.)

14. An expanded new Source Profile screen will open.
15. **Enter** "Stereo-Src" in the Source Name field (J).
16. **Select** the "Analog 1" option from the Source input dropdown menu (K).
17. **Click** the "OK" button (L).
18. From the dropdown menu (H) next to the Create button (G), **select** "Operator Microphone", then **click** the Create button (G). An expanded new Source Profile screen will open.
19. **Enter** "My Mic" in the Source Name field (J).
20. **Select** the "Microphone 1" option from the Source input dropdown menu (K).
21. **Click** the "OK" button (L).

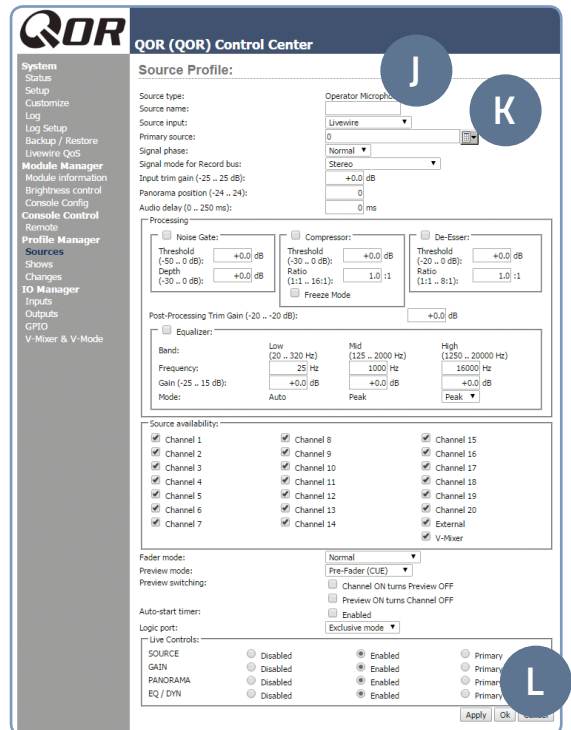
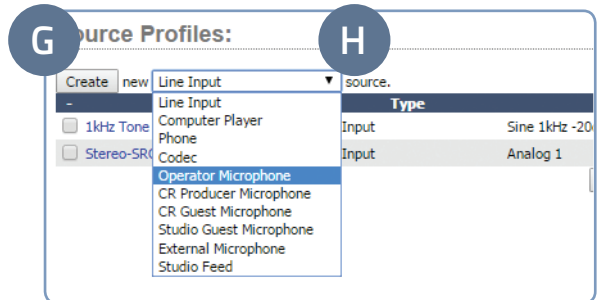
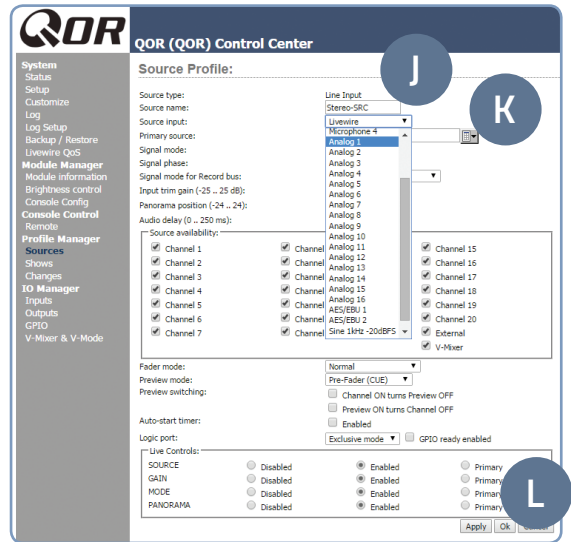
## CONTINUE TO TESTING

Your inputs and outputs have now been configured. Let's get to the fun part. Continue to "Testing Inputs and Outputs".

## INSTALLATION HELP

For more details on other configuration options, or for additional information about configuring a particular Axia Radius model, please access the full manual online at <https://www.telosalliance.com/Axia/Radius>.

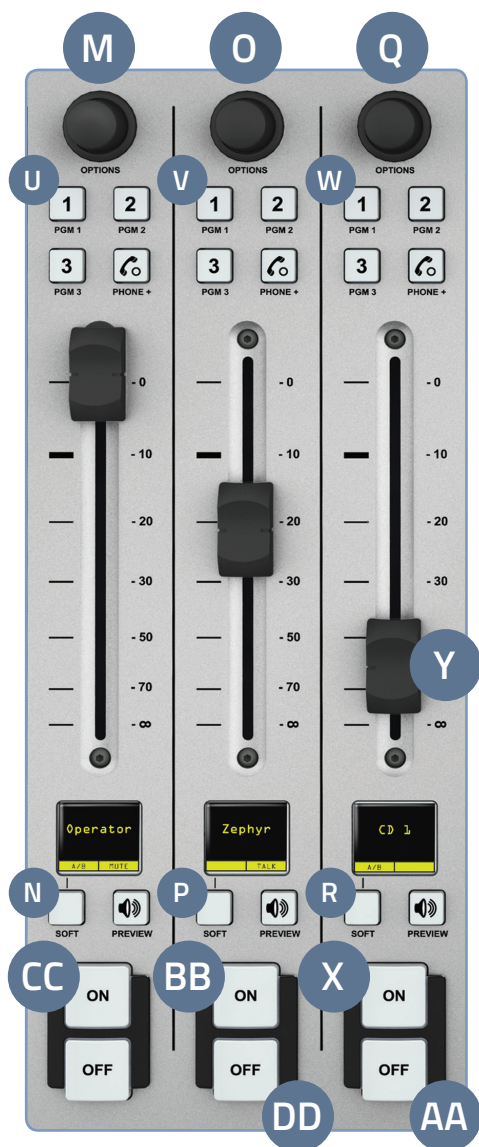
If you have more questions, call the Telos Alliance 24/7 Support Team at **+1 (216) 622-0247**, or email us at [support@telosalliance.com](mailto:support@telosalliance.com), we'd be happy to help you out.





# TESTING INPUTS AND OUTPUTS

1. On the console, **press** the top Options knob (M) of channel 1 (the first fader position).
2. **Rotate** the knob until the OLED for this channel displays “My Mic”, then **press** the Options knob (M) to select.
3. Locate the “Soft” key (N) under the OLED display for this channel and **press** it twice.
4. **Press** the top Options knob (O) of channel 2 (the second fader position).
5. **Rotate** the knob until the OLED for this channel displays “Stereo-Src”, then **press** the Options knob (O) to select.
6. Locate the “Soft” key (P) under the OLED display for this channel and **press** it twice.
7. **Press** the top Options knob (Q) of channel 3 (the third fader position).
8. **Rotate** the knob until the OLED for this channel displays “1 kHz Tone”, then **press** the Options knob (Q) to select.
9. Locate the “Soft” key (R) under the OLED display for this channel and **press** it twice.
10. To the right of the faders, locate the Monitors knob (S). Above the Monitors knob, **press** the PGM 1 button (T) so you are monitoring Program 1.
11. On the fader strips for channels 1, 2 and 3, **press** the PGM 1 (U, V, W) button for each fader to assign the channel to those mixes.
12. **Press** the “On” button (X) for channel 3 and **adjust** the linear fader (Y) for the channel until you see the PROGRAM 1 meter on the LED display (Z) reach -20. **Adjust** the Monitors knob (S) as needed for proper monitoring of the volume in the speakers.
13. **Press** the “Off” button (AA) for channel 3 to turn off the channel.
14. **Press** the “On” button (BB) for channel 2 and **adjust** the levels of the source. Make sure there is audio coming from your stereo source.
15. You should now hear whatever tunes you are jamming to!
16. **Press** the “On” button for channel 1 (CC), the speakers should now be muted. Pull on your headphones and **adjust** the levels for your headphones to a comfortable level.
17. **Press** the “Off” button for channel 2 (DD) to turn off the channel.
18. **Adjust** the level of channel 1 as you speak into the microphone. Note: If you are not able to get adequate levels from the mic, you may need to adjust the gain stages from step 4 of “Basic Local Input Configuration”.



## YOUR SETUP IS COMPLETE!

That's it! You are now ready to experience Axia Radius, the high performance audio console for today's broadcast studio.